

# Newsletter



**WARNDON PARISH COUNCIL**



Meet your new  
Parish Councillors  
See inside



**Autumn 2019**

# Chairman's message

The past year brought significant change to your Parish Council: 5 members stood down, as did the Clerk. A by-election in December 2018 (~£6k cost), and the election in May (£10k). These costs are met by your Parish Council from the parish precept (£27.68 per house, for a 'Band D' house, in 2019).

All members of your Parish Council are unpaid volunteers, even Ray, our interim Clerk & Responsible Financial Officer, who kindly stepped forward to help us through this transitional period and complete our statutory accounts & Annual Governance and Return (AGAR) on time.

These, and all related documents, can be viewed under the "Publications" section of our website (shortlink <http://tiny.cc/xjr6dz>). I'd like to take this opportunity to publicly thank Ray for guiding me in chairing your parish council.

## **So what are Parish Councils, and what do they do?**

*"A local council is a universal term for community, neighbourhood, parish and town councils. They are the first tier of local government and are statutory bodies. They serve electorates and are independently elected and raise their own precept (a form of council tax). There are 10,000 local councils in England with over 30% of the country parished and 100,000 councillors who serve in these local councils, with over £1b being invested into these communities every year.*

*Local councils work towards improving community well-being and providing better services. Their activities fall into three main categories: representing the local community; delivering services to meet local needs; striving to improve quality of life and community well-being."*

See more at [www.nalc.gov.uk/about-local-councils](http://www.nalc.gov.uk/about-local-councils)

The results from the recent Neighbourhood Plan questionnaire have yielded valuable data from you, our fellow residents, about the character and needs of our parish: green spaces, how we travel to work / school, etc.

# Chairman's message cont'd

This helps us urge the City and County Councils for appropriate development of our neighbourhood.

The history of Warndon Parish Council shows how central this role has been; the work on the Neighbourhood Plan is the continuation of this essential role to maintain the balance between the residential, business, environmental and heritage areas of the parish, in keeping with the principles embodied in the blueprint for its layout- the 1988 Warndon Local Plan. See [www.warndonpcnp.org.uk](http://www.warndonpcnp.org.uk) for updates.

You will find more about the history of the Parish Council further on in this newsletter. I hope this helps explain our role and our aims, please contact us if you have any questions.

I would also like to take this opportunity, to wish you all a happy and peaceful festive season and all good wishes for the New Year.

## Chair



The Parish Council welcome residents to attend a Parish Council meeting. Members of the public will be invited to speak for up to 5 minutes. This is to allow for all residents to put forward their concerns.



For the rest of the meeting there is no further public participation unless invited to do so by the Chairman.

Meetings normally take place on the **first Monday** of the month, other than when it falls on a Bank holiday weekend. The meeting is then held on the following Monday. There is no August meeting.

# Lyppard HUB Summer Fete

As we once again dig out our hats and scarves, in readiness for the winter months, summer seems but a distant memory, but one of the highlights in the Warndon Villages calendar, is always the **Lyppard Hub Summer Fete**, which was held on the 14<sup>th</sup> July. A big thank you to all who supported the fete this year, despite the number of sporting events also taking place that day, it was very well attended.



There were performances throughout the afternoon by some of the many groups who run activities at the HUB. Dancers from the Drisya Bharathi School of Dance provided a dazzling performance of both Classical Indian and Bollywood style dance. For more information on activities happening at the HUB call in and pick up a leaflet or go to [www.lyppardhub.co.uk](http://www.lyppardhub.co.uk)

All your Parish Councillors were present throughout the day, and it was our pleasure to talk with many of you about the progress of the Neighbourhood Plan as well as the day-to-day activities of the Parish Council.



# Lyppard HUB Summer Fete

Despite being sited behind the Slimming World stand, I managed to get around to tasting one (or two!) of the burgers cooked by Cllr. Lucy Hodgson and gracefully served by Cllr. Stephen Hodgson. I'm rather envious of Cllrs. Dave Carney and Andrew Cross, who both won prizes either from the tombola or the raffle. Being a F1 fan I was rather disappointed that I missed the opportunity to try out the Super 8 Racing Challenge, but I hear from those who did that it was highly enjoyable.

Your Parish Councillors are not just around for the high days – we're here all year around and are more than happy to hear from you.

On a final note, the Parish Council are pleased to support the Hub and its activities and would like to take this opportunity to thank Lauren Cartwright and the Hub team for planning and organising such a successful event, we are already looking forward to next year's fete.



The gnomes will no longer be part of Lauren's team due to their naughty behaviour on the day!



# History of our Parish Council

Some of the residents who have lived in the parish for many years may already be aware of the history of the parish council, but for the newcomers to area, it might shed some light on how Warndon Parish Council came to exist.



Warndon Parish boundary covers an area from the Worcester and Birmingham canal in the north to Swinesherd Way in the south. Rowland Berkeley, a wealthy wool merchant and banker, purchased the Berkeley estate at Spetchley in 1606. It remained in the family's ownership until it was sold to the developers in 1986 for the development, now known locally as Warndon Villages. The administration of the area passed to Worcester City Council from Droitwich Rural Council in 1952. As Worcester expanded the City Council built new homes in Tolladine and Newtown Roads and in 1958 a large estate to the west of Tolladine Road was built and named Warndon as no-one visualized, that a parish council would be formed in the same area.

The first phase of the Villages development was the 158 houses, built in 1972 and named Heron Grange (Heron Prowting was the developer). Then, in the early 1980s the City Council began looking to expand northwards. This major development caused concern among several far-sighted people living in Heron Grange and Trotshill Lane, each formed a Residents Association and eventually joined forces, quickly realising that they would have more power if they formed a Parish Council because then, by statute, they would be able to comment with authority on the proposed Worcester Local Plan and eventually scrutinize the planning applications and get a genuine say in the overall development. So, in July 1984 Warndon Parish Council was inaugurated with the first meeting in August, present were 5 councillors and a part-time Clerk.



# History of our Parish Council (cont'd)

The Local Plan, was published in 1988 (which covered the whole of the city), envisaged 4500 dwellings being built on the land which was about 640 acres (a square mile). It is a mixed residential estate, predominantly privately owned and with some affordable housing. The most recent housing development was in Mabs Orchard, off Dugdale Drive, which was completed in 2011.

As well as housing, there was provision made for employment, a school, church, several pubs, community centre, doctor's surgery, a large supermarket and a number of smaller shops and takeaway businesses.

A key part of the development was to retain the existing woodland ancient trees and green spaces and link the whole development with connecting footpaths and cycle ways.

There were some minor boundary changes in 1996 and the number of parish councillors increased to seven.



At that time the parish was still part of St.Martin's Ward, which when the building here finally finished was estimated to be a population of 14,000 adults administered by one County Councillor and three City Councillors. This created a problem due to it's size and the City Council committees did not know how to refer to the original ward or the new one. It was resolved when the Parish Council suggested that they would be known as Warndon Parish and the 'old' part known as Warndon.

The government then came up with the idea to give more power to the people, there should be a reduction in the number of electors served by a district councillor. A figure of approximately 2000 was suggested and the 2010 Electoral Register shows 8082 adults, with at that time the 34 homes at Mabs Orchard, still to be completed, so it looks like they got it about right.

# History of our Parish Council (cont'd)

In 2002, the big Electoral Review began which eventually led to boundary changes. There were many changes amongst the City Wards, but ours was the biggest. We were separated from 'old' Warndon, which became two wards, Gorse Hill and Warndon with one County Councillor.

Warndon Parish was divided into two wards with the boundary along the edge of the back gardens of the houses in Middle Hollow and Trotshell Lane which by this time had been split by Mill Wood Drive. Thus we have Warndon Parish North and Warndon Parish South, covered by one County Councillor and the four City Councillors. The first City elections in the parish were held in 2004.

At this point the Parish Council asked for an additional councillor, making eight, with four in each ward. It was agreed that although each parish councillor is elected for one or other of the wards, their remit is the whole of the parish.

During the 35 years to date, there have been 40+ councillors, ten of whom have been Chair of the Council and there have been six Parish clerks.

## **Some of the Parish Council's recent achievements**

- Sponsor thirteen dog litter bins around the parish and persuaded the City Council to install more.
- Since 2005, part funded an Estate Warden in partnership with the City Council. Due to a cut in funding the City Council reduced the grass cutting in the parish, the Parish Council agreed to fund additional grass cutting.
- For the last four years, the Council has operated a Vehicle Activated Sign (VAS) which is rotated around our feeder roads. This has led to some reduction in speeding vehicles.
- In 2016, the Council purchased three defibrillators across the Parish for public use 24/7.



# Parish Council Vacancy

## Warndon Parish Council

is seeking to appoint a

**Part-Time Clerk to the Council/Responsible Financial Officer**

for 10 hours per week.

**Salary circa £35,000 per annum pro rata**

(based on national pay scales for Parish Clerks dependent on experience/qualifications)

This is a home-based role, providing effective administrative support to the Parish Council, with a requirement to attend at least one evening meeting per month (normally held on the first Monday in the month).

The Parish Council is looking for a confident, professional, organised and self-motivated individual, who preferably has previous experience working as a Parish Clerk/RFO and with knowledge of local government. The Council would support the clerk with their professional development should they wish to achieve the CiLCA qualification.

You will be expected to be the liaison for all Councillor and resident enquiries and be able to effectively use a variety of software packages, have some accountancy knowledge, excellent communication and administrative skills, experience in minute taking and the ability to work accurately, as attention to detail is essential for this role.

**Closing date for applications is 30<sup>th</sup> December 2019**

More information about this position can be found on Warndon Parish Council website under 'Publications'

To apply please email the Clerk for an Application Pack.

[administration@warndonparishcouncil.org](mailto:administration@warndonparishcouncil.org)

or call **01905 458439**

# Parish Allotments



Autumn draws to a close and it has been a busy season for the allotment holders, who have grown some superb produce throughout the summer, but as nature slows down, it provides an opportunity to start planning ahead for next spring.



There has been a couple of recent changes of plot holders, but with still plenty of interest from residents keen to grow their own produce there remains a waiting list of seven people, however the longest wait is since April 2019.

The permanent extension to the water system has finally been completely installed. One further improvement is the provision to drain down the whole system in Winter, which should resolve the continuing problems that have been experienced with burst pipes. The new drain down facility will allow all water present during Winter to be below ground level and in addition the site has been provided by a single non-return valve replacing the individual units which were also freezing regularly.

We are glad to report that the car park has also coped with the increased amount of traffic since the extension was build. There was some concern that the traffic would overflow and parking on nearby streets would occur but that has not been the case.

The site currently has only 3 plots let as full size units and the rest is let as forty-six half plots. If you are interested in renting an allotment and you wish to add your name to the waiting list then please contact the Parish Council

[allotments@warndonparishcouncil.org](mailto:allotments@warndonparishcouncil.org),



# Your Parish Councillors

Following the election, held earlier this year we would like to introduce your Parish Councillors. Three previous parish councillors were re-elected and there will be some familiar faces from their other public roles. Councillors contact details can be found on the back of this newsletter, should you have need to contact them.



**Councillor**  
**Lucy Hodgson**  
**Finance**

I have lived in Warndon Villages for the last 4 years with my husband, Stephen. I currently serve as both a County Councillor and City Councillor, representing Warndon Parish South since 2004. On a more local level, I am a trustee of Lyppard Hub, a governor at Lyppard Grange school. Earlier this year I was delighted, for the first time to be elected as a Parish Councillor and will be assisting with the Parish Council's finances.

Any spare time I have, I love to cook, bake cakes, garden and watch Worcester Warriors.

I have lived in Worcester for 15 years. I am a self-employed part time AAT accountant which allows me to fit work around my disabled partner and autistic son. I am currently Treasurer for both a local political party and Worcester City Royal British Legion. I am also an organiser for Worcester Armed Forces and Veterans Breakfast Club, being a former reserve Royal Engineer and an active Veteran with my own Regiment. Leisure time is limited, but you will find me at Sixways when Worcester Warriors are at home and every Sunday when my lad plays for the Worcester Dragons. For the past 12 years, I have been a volunteer at the Worcester Beer and Cider Festival on the racecourse.



**Councillor**  
**Dave Carney**  
**Finance**

# Your Parish Councillors

When my wife Hazel and I first moved to Warndon Villages, we initially thought we would be here for just a few years...19 years soon passed and we now have two teenage daughters at school locally. We have stayed because of the friends we have made here, the growing feeling of community – knowing your neighbours, local work, good schools and a decent standard of living. I was elected to the Parish Council in November and took up the Chair 's role in May.



**Councillor  
Andrew Cross**  
**Chairman & Finance**



**Councillor  
Robyn Norfolk**  
**Vice Chair**

My family and I moved to the villages in 2003. I'm an IT Security Architect working in the financial services sector and I am fortunate enough to spend a significant amount of time working from home. We're lucky enough to live adjacent to Tolladine Wood, one of the many beautiful green spaces in the parish. We enjoy a good walk with our Labrador, Toby and the shared usage footpaths also provide us with the opportunity to get out and about on our bicycles.

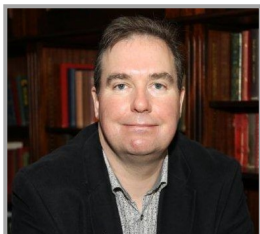
I've lived in the parish since the early 1980s, during which time my wife and I have raised our family. We're both retired now, and particularly enjoy many of the green spaces we are so lucky to have throughout the local area. When we can, we help out with the volunteer groups who help to look after those green spaces."



**Councillor  
Andy Taylor**  
**Planning, Rights of Way  
&  
Neighbourhood Plan**



# Your Parish Councillors



**Councillor**  
**Stephen Hodgson**  
**Planning**

Originally from the north east of England, but having lived in Worcester for over 30 years I now consider it home and moved to the Berkeleys in 2015 with my wife, Lucy. As well as a serving City Councillor, I have a full-time job with a local food company, but in my spare time I am a passionate sports fan, being a season ticket holder at the Warriors. I am a member of the Worcester Vigornia Rotary Club and play a lead role in the Christmas Parcels project and on Sunday mornings you will see me at St. Nicholas church, a gem in our wonderful neighbourhood.

I moved to the parish with my husband in 1997, when the villages was still in major development. It has been a pleasure to see our lovely green spaces grow and mature, but I am keen to ensure the area continues to thrive and is cared for and so in 2005 I became a Parish Councillor and I am delighted to have been re-elected for a further term. I am a keen gardener and a regular helper with the local volunteer groups.



**Councillor**  
**Dawn Merriman**  
**Environment**



**Councillor**  
**Jan Scrine**

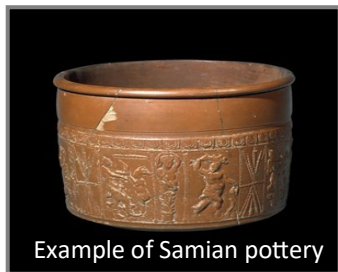
Worcestershire (my family home) offers excellent quality of life and good transport networks so when I retired four years ago after working for eighteen years in the West Yorkshire conurbations, I happily moved into Warndon Villages, delighted to discover such a pleasant environment. And I'm still enjoying exploring! As a founder member of The Milestone Society and a committee member of Worcester Civic Society, I'm particularly interested in travel, transport and the built environment, both historically and in ensuring that future economic development has the appropriate associated infrastructure.

# Romans in Warndon Villages

You may recall in late Autumn of 2017 prior to the planned and now completed extension to the Mabs Allotment site, a fortnight long community archeological dig was undertaken by Rubicon Heritage Services Ltd for Worcester City Council at Mab's Orchard in Trotshill and was grant-aided by the Heritage Lottery Fund and Worcestershire County Council.



The dig on the site of a Roman farmstead was excavated by volunteers under the supervision of professional archaeologists. The finds have since been processed and a vast majority of ceramic material found was once Roman pottery, indicating 2nd century Roman activity on the site.



Example of Samian pottery

There was also the presence of both medieval and post-medieval pottery and a very small amount of ceramic building material (including a Roman brick). Of the large number of pottery fragments found, the best dating evidence came from the Central Gaulish samian pottery (a glossy, red, fine ware pottery, used at the table) which included a bowl produced in Les-Martres-de-Veyre, in the Auvergne region (west of Lyon) and dated to c AD 100–125 and a dish produced in the same area at Lezoux (central Gaul) between c AD 120–160. The Lezoux samian ware pottery was mass-produced and the finished pieces were often stamped because the individual potters or workshops fired their pottery in shared large-scale kilns, so each item had to be identifiable by name. This provides excellent information about distribution and dating. When digging a Roman site, the discovery of even the smallest sherd of Samian ware brings a smile to any archaeologist. It is instantly recognisable, the classic Roman ceramic find.

# Romans in Warndon Villages



Two fragments of mortaria (similar to a present day pestle and mortar) were also found, one of which was stamped with the maker's name, Decanius, one of the major potters in the West Midland potteries and dating to c AD90-120. The location of these potteries is unknown, but distribution of their mortaria leaves no doubt that their prime market was Wroxeter, once Rome's fourth largest city in Britain, though their products reached many other sites in the West Midlands, Wales and north-west England.

More information can be found on Worcester City Council website <https://mabsarchaeology.wordpress.com/2018/11/29/mabs-orchard-the-results/>



## Warndon Parish Council Neighbourhood Plan

Throughout the summer the Neighbourhood Plan Steering Committee have been getting on with completing a very time consuming assessment, which has involved photographing, plotting and calculating the area of each of our many green spaces. More recently the group has sent out a Questionnaire to all the businesses in the parish, to seek their views and which alongside the resident's feedback, will feed into the completed Neighbourhood Plan.

Brodie Planning Associates, have now officially been appointed in the capacity of consultant, using their knowledge and expertise to assist the committee in pulling the whole process together. Brodie's will be liaising with the City Council during the forthcoming review of the South Worcestershire Development Plan to ensure our Neighbourhood Plan can sit alongside when future planning matters are being considered.

# Parish Warden News

In recent months, you may have seen a new face around the Parish, as earlier in the year Alex Booth our Parish Warden took up a twelve month secondment with the Community Engagement Team. Currently Trevor Walters is covering his workload along with Luke, the Parish Warden for St Peter's Parish. Trevor has worked for the City Council for some time and is very knowledgeable about the area.



**Friends of Warndon Villages** have continued to meet through the summer months, although a couple of the events had to be cancelled due to poor weather conditions and other unforeseen circumstances. You will find a list below of events planned for the next few months, everyone is welcome to join.



The Group meet on the **fourth Tuesday** of each month 10.30 am-1.00pm. You can keep up to date with the Friends activities on the Friends of Warndon Villages own Facebook page.

## Friends of Warndon Villages events

December 17th	Lyppard Ponds
January 27th	Corfe Avenue Pond
February 25th	Sudeley Park



**Register to vote** - a reminder

You need to be on the **Electoral register** to vote in elections/referendums.

Go to <https://www.gov.uk/register-to-vote>

# Volunteering in the Parish

There really are lots of opportunities to join like-minded people who take pride in their local area. A new volunteer group, The **VEG-The Villages Environmental Group**, has recently been set up by local residents. The group aims to improve the biodiversity of Warndon Villages and increase the wellbeing of residents by creating more opportunities to connect with and learn about our beautiful local environment.



One of the group's first projects, in conjunction with Worcester City Council, is to restore the three wildflower meadows of Aconbury, Trotshill and Hillwood, which have been neglected in recent years. This summer volunteers removed all the ragwort and scrub at Aconbury, so that the grass could be cut and collected, with some harvested for hay. The long process of restoring traditional wildflower meadows

has begun. The group have also been clearing the cages around the fruit trees in Aconbury Orchard and will be replacing some of dead trees with new ones. The group have also installed some bat boxes. If you are interested in finding out more details about this group follow them on their own Facebook page or contact **Paul Snookes T: 07742111239**. The group meet on the **fourth Sunday** of the month 10 a.m-1 p.m.

The Parish Council are aware of the increasing number of residents who take it upon themselves to litter pick around our Parish. On behalf of the community we would like to say a **BIG** thankyou to you **ALL** for your hard work in keeping our streets and green spaces looking good. Anyone wishing to join the monthly Litter Picks which are held on the **second Thursday** of the month. We meet at the **Lyppard HUB at 10.30 a.m.** Equipment is provided.



# Parish matters



## The first bat friendly street lights in the UK

Some of you may have seen this on the local 'News' or in the press, but for those residents who missed it, you may be wondering why there are unusual coloured street lamps in Parsonage Way! This is 'red' 'bat-friendly' lighting and will provide the bats with a 60m corridor linking ancient woodland on either side of the road. Some species of bat are light shy and will not cross roads lit by white light, this can stop them accessing their food and water supplies. Similar lighting schemes in the Netherlands have proved successful, helping to preserve bats and other nocturnal wildlife.

**Trotshill Lane** Many of you will be aware that in recent months the wooden fence at the end of Trotshill Lane, has been subject to vandalism. Recently this has been replaced with a more substantial fence and is hoped it will withstand any further damage.



**NEW Foot & Cycle bridge on Swinesherd Way** You cannot have failed to notice if you have travelled along the A4440 in recent weeks, the new bridge which now spans Swinesherd Way. This has been installed to connect the new housing development known as 'Whittington Walk' with the city and has been funded by Persimmon Homes.

**Lyppard Pond Viewing Platform** In January work will finally commence on the replacement viewing platform. The work is expected to take approximately three weeks, however this timescale could be impacted by any severe weather. The platform will consist of an oak frame and metal support posts with non-slip decking. The contractor who has been awarded the contract is familiar with great-crested newt habitats. Their in-house ecologist will ensure the project has the least impact on the site.



# Parish Matters

We know many of you were thrilled to see the wonderful display of wildflowers, along Hastings Drive and Woodgreen Drive/ Plantation Drive roundabout. This was a City Council initiative to help improve wildlife and biodiversity. Council members were asked to propose sites throughout the City, these were then assessed for their suitability and in Warndon Villages we were fortunate to have two of the proposed sites.



A reminder of those lovely summer days



**West Mercia police officers** are using a new app to help pinpoint the location of people in need. The location technology called **What3Words** has divided the world into 3mx3m squares. Each square has been allocated a **unique three word address** which anyone can refer to their exact location by using three randomly chosen words. Being able to identify a caller's location is incredibly important as sometimes when people make that emergency call, it can be difficult for them to identify their exact location. Chief Inspector Gareth Morgan said "This app is proving really useful as it can pinpoint someone's location no matter where they are. This means your location can be quickly established and you can be reached as quickly as possible, helping save lives.

You can download the App to your mobile phone, it is free to use." The app, which also works when there is no data connection will operate offline via GPS. Go to the **What3Words** website, the App Store or Google Play.

**Reminder : Dial 999** if someone is in immediate danger or you need support right away. For non-emergencies you can use **101** or, report online through **West Mercia Police** website by clicking on the REPORT tab

[www.westmercia.police.uk](http://www.westmercia.police.uk)



# Your Parish Council

## **Chairman Finance & Planning & Rights of Way**

Cllr Andrew Cross

07587184039

E-Mail: [Andrew.Cross@WarndonParishCouncil.org](mailto:Andrew.Cross@WarndonParishCouncil.org)

## **Vice Chairman Leisure & Community**

Cllr Robyn Norfolk

07840778856

E-Mail: [Robyn.Norfolk@WarndonParishCouncil.org](mailto:Robyn.Norfolk@WarndonParishCouncil.org)

---

## **Planning & Rights of Way**

Cllr Andy Taylor

01905 25146

E-mail: [Andy.Taylor@WarndonParishCouncil.org](mailto:Andy.Taylor@WarndonParishCouncil.org)

## **Finance**

Cllr Dave Carney

07901 786669

E-mail: [Dave.Carney@WarndonParishCouncil.org](mailto:Dave.Carney@WarndonParishCouncil.org)

---

## **Environment**

Cllr Jan Scrine

01905 923051

E-mail: [J.S@WarndonParishCouncil.org](mailto:J.S@WarndonParishCouncil.org)

Cllr Dawn Merriman

01905 729250

E-Mail: [Dawn.Merriman@WarndonParishCouncil.org](mailto:Dawn.Merriman@WarndonParishCouncil.org)

---

## **Finance**

Cllr Lucy Hodgson

07879 880384

E-mail: [Lucy.Hodgson@WarndonParishCouncil.org](mailto:Lucy.Hodgson@WarndonParishCouncil.org)

---

## **Planning & Rights of Way**

Cllr Stephen Hodgson

01905 754724

E-mail: [Stephen.Hodgson@WarndonParishCouncil.org](mailto:Stephen.Hodgson@WarndonParishCouncil.org)

---

## **Interim Clerk to the Council**

***Ray Morris***

Tel: 01905 458439

E-mail: [Clerk@WarndonParishCouncil.org](mailto:Clerk@WarndonParishCouncil.org)

The Council meets on the first Monday in the month (except Bank Holidays & August)  
at 7.30pm in the Lyppard Hub.

**PARISHIONERS ARE WELCOME TO ATTEND AND SPEAK DURING THE FIRST 30 MINUTES BY  
PERMISSION OF THE CHAIRMAN**

Please contact the appropriate Councillor(s) or the Clerk on any matter with comments,  
complaints, or if you just need advice or information.

**web site: [www.WarndonParishCouncil.org](http://www.WarndonParishCouncil.org)**

**or follow us on [facebook.com/warndonparishcouncil](https://facebook.com/warndonparishcouncil)**

